



Moraine Valley Community College Campus Tree Care Plan 2016-2021

Table of Contents

I.	CAMPUS TREE CARE PLAN PURPOSE:.....	1
II.	RESPONSIBLE DEPARTMENT.....	1
III.	THE CAMPUS TREE ADVISORY COMMITTEE.....	1
IV.	MORaine VALLEY CARE POLICIES–TREE PLANTING-MAINTENANCE & REMOVAL.....	1
V.	PROTECTION & PRESERVATION PROCEDURES.....	2
VI.	GOALS & TARGETS.....	3
VII.	TREE DAMAGE ASSESSMENT.....	3
VIII.	PROHIBITED PRACTICES.....	3
IX.	DEFINITIONS.....	3
X.	COMMUNITY STRATEGY.....	4
XI.	TREE CARE ADVISORY COMMITTEE.....	4

I. CAMPUS TREE CARE PLAN PURPOSE:

- Protect and maintain the campus urban forest by managing the impact of development and constructions on campus trees.
- Encourage the use of Moraine Valley grounds as a living, learning lab.
- Promote species diversity in the tree population.
- Protect high-value campus trees during construction and renovation projects.
- Encourage campus community members to respect and value the campus urban forest.
- Provide protection and to make sure that removal of all trees on campus are conducted with proper considerations and adequate replacement program.

II. RESPONSIBLE DEPARTMENT

- The responsibility of the Campus Tree Care Plan rests with the Moraine Valley Campus Operations Grounds Department and the Tree Advisory Committee.

III. THE CAMPUS TREE ADVISORY COMMITTEE

- **Committee.** The tree advisory committee has representation from the Moraine Valley Climate Action Team, student Green Club, faculty, community relations department, grounds department, and community members. The tree advisory committee meets at least biannually, often virtually, and reviews the Campus Tree Care Plan, supports its annual goals and advises on tree education and promotion programs
- **Roles of Representatives.** The committee members will accept to serve for a period of one calendar year with a renewal option. Committee members are expected to actively participate and contribute in policy or guideline issues as well as research/information gathering that support the Campus Tree Care Plan annual goals.



IV. MORAINE VALLEY CARE POLICIES—TREE PLANTING- MAINTENANCE & REMOVAL

- **Plant Selection and Landscaping.** Plant species used on Moraine Valley campus will continue to be guided with Botany Faculty, Landscape Architects, and contracted tree service provider all overseen by committee and campus operations. Moraine Valley contains both native and exotic species that have been screened for adaptability to physical conditions and serviceability, to meeting planting needs based on site orientation, drainage, soil condition, use, etc. Where appropriate, the best plant shall be selected for a given site, which may or may not be a “native”. Trees to be used on campus must be preselected at the farm or nursery for good quality and tagged.
- **Transplanting.** Desirable trees in a development area or other construction sites shall be transplanted where there is an acceptable location.
- **Fertilizing.** Newly planted trees should not receive fertilization during the first growing season except in a situation where a soil test recommends its use. A slow release type of fertilizer should be used around the tree basin. Trees in poor condition should receive specialized focus of care. Routine

tree fertilization is not recommended; however, campus trees receive adequate nutrients from turf, shrubs and groundcover routing application of fertilizers.

- **Preventive Maintenance Pruning.** The tree team systematically prunes trees annually through a preventive maintenance pruning program. Preventive maintenance pruning is conducted on an as needed basis at this time. All campus trees are periodically surveyed and rated based on their pruning needs to determine scheduling priorities.
- **Fallen Limb Removal.** When limbs fall from trees on campus, members of the campus community can call in or make a service request (via web base) and by staff inspection to promptly clean up the debris. Every attempt will be made to clean up dropped limbs within the same day, depending on the severity of the storm and the extent of the tree damage. We do not maintain private properties on Moraine Valley campus.
- **Hazard and Emergency Tree Removal.** If the tree is considered a hazardous tree, it is then scheduled for removal. All hazardous trees have two things in common, a significant defect and a potential target for falling on a building, car or pedestrian. Most tree removals are done by staff or contractor. Very large trees needing a crane are contracted for removal.
- **Managing for Catastrophic Events.** In the event of severe weather conditions such as tornadoes or hurricanes, falling trees will be removed by Grounds Services staff or an outside tree removal company. Roads and streets shall be cleared first, then access to critical buildings, administration, buildings with critical labs, library, student center, etc. In the advance of severe weather conditions, all necessary equipment shall be checked for readiness and safety by staff.



V. PROTECTION & PRESERVATION PROCEDURES

- **Protection and Preservation Policies and Procedures.** Tree protection zones shall be established and maintained for all trees to be preserved in a construction site, including barriers for each tree or grouping to protect the trunk and root systems. No root raking shall be allowed within any tree protection zone at any time during clearing, grading or construction of a project. No equipment or vehicle shall be parked or construction material stored, or substances poured or disposed of or placed within any tree protection zone at any time during clearing or construction of a project. To the extent possible, all site work shall be planned and conducted in a manner that will minimize damage to protected trees from environmental changes such as altered site drainage or any other land disturbance within or immediately adjacent to the critical root zone of the tree.



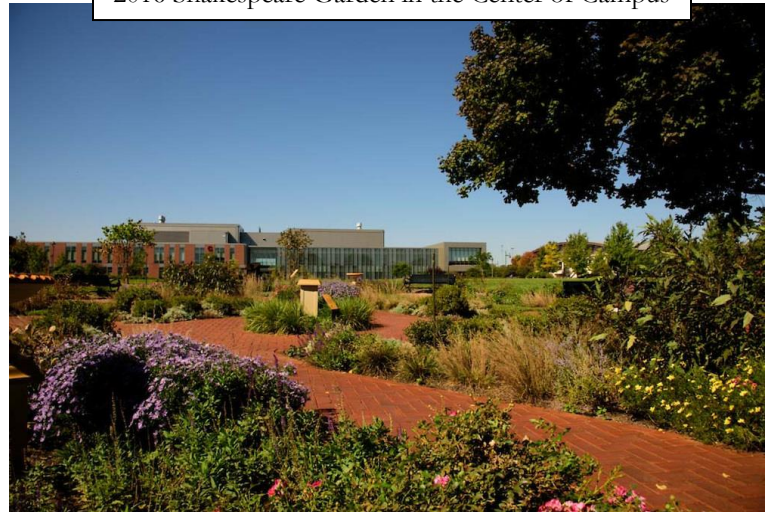
Aerial View of Main Campus

- **New Building or Facilities Construction.** Development activities shall be planned to the extent possible in order to preserve and protect trees on Moraine Valley campus. Any tree on Moraine Valley campus that must be removed to accommodate development, damage during storm events, disease and water/sewer repairs will be considered for transplant/relocation on campus or donated to local community organization.
- **Design Requirements.** Design of a new development or reconstruction will follow past development guidelines which includes a green space plan in the proposal. Such plans include a tree protection, tree establishment and landscape plan.

VI. GOALS & TARGETS

- Develop an integrated, ecologically based landscape and open space system that will help Moraine Valley achieve some of its sustainability goals by
 - i. Increasing campus tree canopy
 - ii. Refining our comprehensive campus tree inventory
 - iii. Creating an attractive, user-friendly tree identification map & promote its availability to the community
 - iv. Increasing use of campus for passive recreation, informal education, and use by faculty for formal, living learning lab education

2016 Shakespeare Garden in the Center of Campus

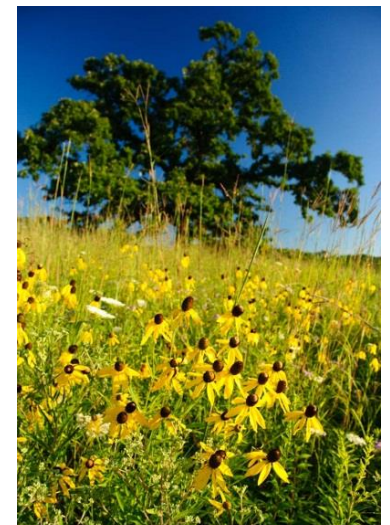


VII. TREE DAMAGE ASSESSMENT

- Trees are evaluated to determine if it should be removed, pruned, or receive treatment. Removed trees are updated on the inventory list. Higher profile trees might be assessed by an outside consultant.

VIII. PROHIBITED PRACTICES

- Approval for all tree related activities including tree planting must be secured from the office of the Executive Leadership, Director of Campus Operations with the Committee.
- No work shall be performed or any plant disturbed on campus without the consent of the Director of Operations.
- No signage shall be affixed to a tree in any manner, unless approved by the Director of Campus Operations.
- No bicycles or mopeds shall be locked to a tree at any time.



Native Prairie, Nature Study Area

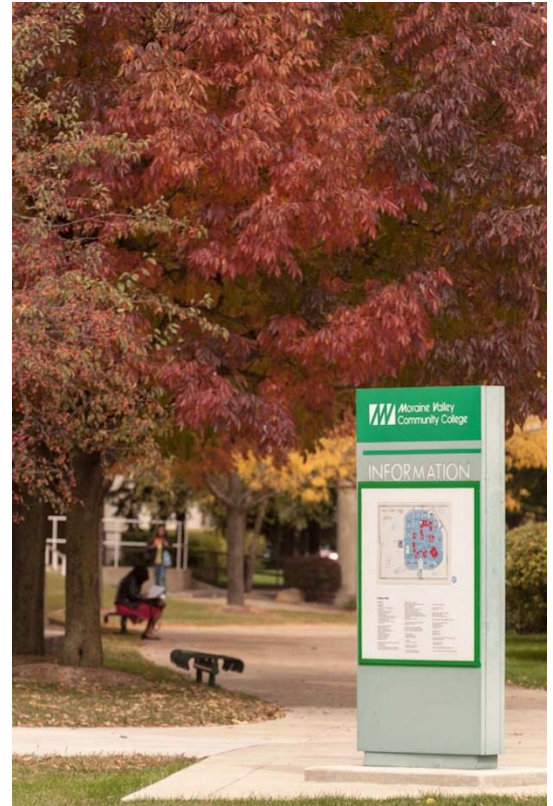
IX. DEFINITIONS

- **Clearing** – The removal of trees or other vegetation.
- **Development** – The act, process or state of erecting buildings or structures, or making improvements to a parcel or tract of land.
- **Green space** – Any area retained as permeable unpaved ground and dedicated on the site plan to supporting vegetation.

- **Impervious surface** – A solid base underlying a container that is nonporous, unable to absorb hazardous material, free of cracks or gaps and is sufficient to contain leaks, spills and accumulated precipitation until collected material is detected and removed.
- **Native tree** – Any tree species which occurs naturally and is indigenous within the region.
- **Tree establishment plan** – A map and supporting documentation which describes, for a particular site where existing trees are to be planted in compliance with the requirements of these regulations, the types of trees and their corresponding tree for reforestations.
- **Tree protection plan** – A map and supporting documentation which describes for a particular site where existing trees are to be retained in compliance with the requirements of the regulations, the types of trees and their corresponding tree for reforestations.
- **Tree protection zone** – The area surrounding a preserved or planted tree that is essential to the tree’s health and survival, and is protected within the guidelines of these regulations.

X. COMMUNITY STRATEGY

1. Annually release articles about Moraine Valley’s participation in the Tree Campus USA in the student’s newspaper “Glacier” and the staff newspaper “Valley View”. Information hosting a tree inventory, participation in the Tree Campus USA, and educational information about the landscape, will be hosted on the Moraine Valley Community College Sustainability Website, www.morainevalley.edu/about/sustainability and www.morainevalley.edu/community/nature-study-area/. Additionally, annual releases are made to the local media through the office of Marketing



XI. TREE CARE ADVISORY COMMITTEE

- Rick Brennan, Director Campus Operations, Moraine Valley Community College
- Beth Corrigan, Coordinator Community Trees Program, Morton Arboretum
- Dr. Pamela Haney, Vice President Academic Affairs, Moraine Valley Community College
- Stephenie Presseller, Manager Sustainability, Moraine Valley Community College
- Victoria Velazquez, Vice President Student Green Club, Moraine Valley Community College
- Kevin Zehr, GIS Tree Inventory Intern, Center for Sustainability, Moraine Valley Community College
- Maura Vizza, Coordinator Community Relations, Moraine Valley Community College
- Dr. Amy Williamson, Faculty Psychology, Moraine Valley Community College
- Michelle Zurawski, Faculty Biology, Moraine Valley Community College

