

ASHE
Program

Board of Trustees

Sandra S. Wagner, Chairman
Patricia E. Roach, Vice Chairman
John J. Daley, Secretary
Patrick D. Kennedy
Joseph P. Murphy
Susan Murphy
Mary Nolan
Casey J. Banks, Student Trustee
Dr. Vernon O. Crawley, College President



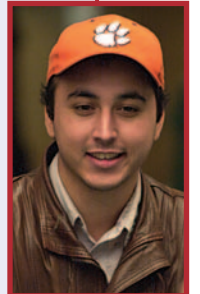
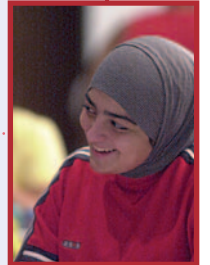
Moraine Valley
Community College

10900 South 88th Avenue
Palos Hills, IL 60465-0937
www.morainevalley.edu

03895M

ASHE Program

Access and
Success in
Higher
Education



Multicultural Student Affairs
College Center, Room C247



As part of Moraine Valley Community College's mission to engage in "sensitivity to its partnership with a diverse and multicultural community," the Access and Success in Higher Education (**ASHE**) Program specifically addresses the needs of individuals whose primary language is not English as they navigate through the course of their educational experience.

ASHE is committed to promoting access to higher education and training programs through Moraine Valley, making higher education attainable to our entire diverse community, including those with limited English skills.

We welcome and encourage your participation in our assistance program. Our academic, social and cultural services, along with your endeavors, are the key ingredients to your academic success and goal achievements.



How Can ASHE Help You?

- Assistance with college application and registration
- Transition support from high school through community college to university level
- Assistance with college and financial aid application
- Interpretation of placement test and advisement
- Academic support activities
- Linkage with job placement and/or transfer to baccalaureate institutions
- Coordination of cultural/social programs
- Access to all activities and programs sponsored by Multicultural Student Affairs

For More Information

Contact Arlene de la Paz-Kane, program coordinator, at (708) 974-5475, or visit Room C247 in the College Center.